

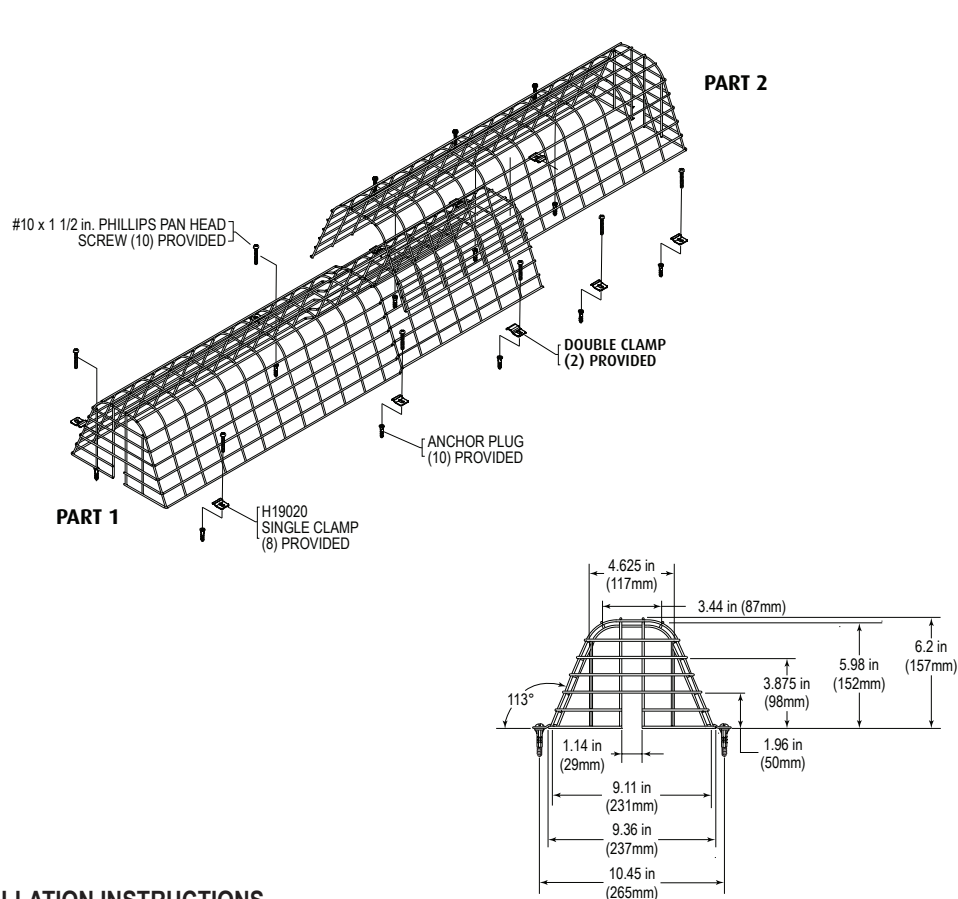


Safety Technology International

2306 Airport Road
Waterford • Michigan • 48327-1209
Phone: 248-673-9898
E-mail: info@sti-usa.com • Web: www.sti-usa.com

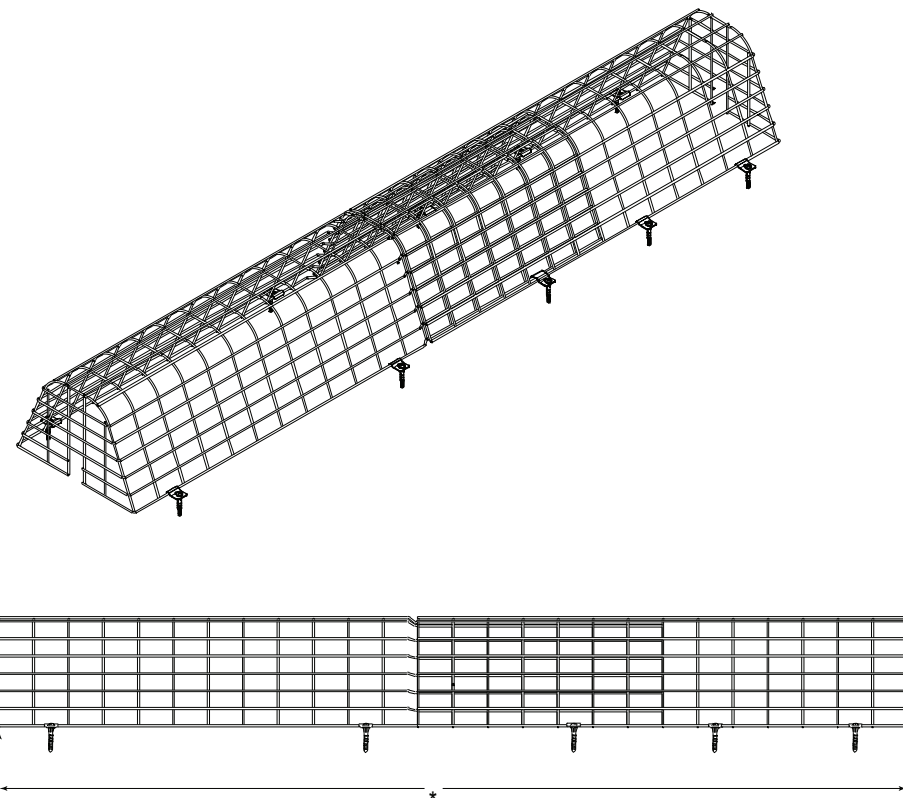
Taylor House • 34 Sherwood Road • Bromsgrove
Worcestershire • B60 3DR • England
Tel: +44 (0)1527 520 999
E-mail: info@sti-emea.com • Web: www.sti-emea.com

Unit 7A • Lockheed Avenue
Airport Business Park
Waterford • X91 HWF2 • Ireland
E-mail: info@sti-emea.com



INSTALLATION INSTRUCTIONS

1. Align guard (part 1) over existing fluorescent light.
2. Mark (4) mounting holes. Set guard aside. Drill holes 1/4 in. (6.3mm) diameter and insert anchors into ceiling. Install screws through clamps and into anchors. Do not tighten.
3. Position guard over light. Slide clamps onto top wire of guard and tighten screws.
4. Align guard (part 2) over existing fluorescent light guard. Have a minimum of 1 section of wire overlapping.
5. Repeat steps 2 and 3.
6. Mark and drill holes for double clamp where part 1 and part 2 overlap. Insert anchors into ceiling. Install screws through clamps and into anchors and tighten.



LENGTH	MAXIMUM	MINIMUM
STI-9880	62.75 in. (1593mm)	51 in. (1295mm)
STI-9881	98.25 in. (2495mm)	74.75 in. (1898mm)

SERVICE

To service the unit, loosen but do not remove (5) screws on one side of guard. Slide clamps away from wire. Carefully rotate guard away from light fixture to service.

Three year warranty or a one year limited warranty
(from date of purchase) on most products. See website for details.
Electronic warranty form at www.sti-usa.com/wc14.

STI-9880 & STI-9881 FLUORESCENT LIGHT FIXTURE GUARD

All specifications and information shown were current as of publication and are subject to change without notice.

9880IS MAR2024



USA



EMEA

ADDITIONAL WIRE GUARDS AVAILABLE

Visit www.sti-usa.com/w1 for complete details

All dimensions are approximate

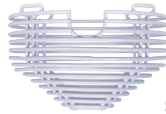
SMOKE DETECTOR GUARDS

STI-9601	8.25 x 2.75"
STI-9601-SS	8.25 x 2.75"
STI-9602	8.25 x 4.25"
STI-9604	7 x 3.25"
STI-9604-SS	7 x 3.25"
STI-9605	7.125 x 4.5"
STI-9605-SS	7.125 x 4.5"
STI-9609	8.25 x 4.6"
STI-9609-SS	8.25 x 4.6"

STI-9610	8.25 x 6"
STI-9701	7 x 2.8"
STI-9712	6.87 x 4.53"
STI-9713	6.87 x 2.50"



STI-9604



STI-9712

BEAM SMOKE DETECTORS

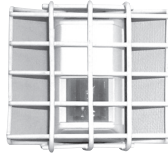
STI-9623	7.75 x 6 x 6"
STI-9624	8.875 x 5.5 x 4.75"
STI-9706	10.82 x 9.32 x 4"
STI-9707	11 x 9.62 x 5.5"
STI-9840	6.61 x 5.78"
STI-9841	11.52 x 10 x 3.58"
STI-9845	6.7 x 9.2 x 4.07"
STI-9846	7.6 x 11.6 x 5.6"



STI-9624

PIR GUARDS

STI-9618	4.62 x 5.37 x 3"
STI-9619	7.75 x 5.37 x 5.62"
STI-9620	6.25 x 4 x 2.25"
STI-9621	7 x 5.75 x 4.50"
STI-9622	8.75 x 4 x 3.75"



STI-9618



STI-9621

CLOCK/BELL WIRE CAGES

STI-9631-R	10.5" Diameter - Red
STI-9635	14.25" Diameter
STI-9636	20.75" Diameter
STI-9637	26.75" Diameter



STI-9636

EXIT SIGN WIRE CAGES

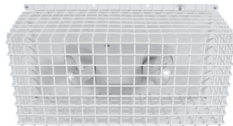
STI-9640	10.5 x 13.75 x 2.75"
STI-9740	15.5 x 20.5 x 6"
STI-9742	15.59 x 16.09 x 3.30"



STI-9640

EMERGENCY LIGHT CAGES

STI-9641	19.7 x 14.6 x 4"
STI-9644	8.7 x 17.7 x 5"
STI-9645	13.8 x 21.7 x 5.9"
STI-9649	10.75 x 24.75 x 11.25"
STI-9703	5 x 13.5 x 4"



STI-9649

BEACON & SOUNDER CAGES

STI-9614	7.9 x 6"
STI-9615	3.7 x 3.5"
STI-9617	5.9 x 4.9"
STI-9664	3.86 x 6.18"
STI-9665	7 x 8.43"
STI-9750	9.6 x 2.8"
STI-9754	8.4 x 9.2 x 3.5"
STI-9760	8.5 x 3.2"
STI-9761	8.5 x 5.7"
STI-9762	6.2 x 4.75 x 2.5"
STI-9763	6.2 x 4.75 x 4"
STI-9764	6.6 x 6 x 2.5"
STI-9765	6.6 x 6 x 4.4"
STI-9766	8.2 x 6.75 x 2.9"
STI-9767	8.2 x 6.75 x 5"



STI-9615

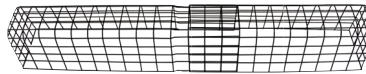


STI-9664

MISCELLANEOUS WIRE CAGES

STI-9705	7.4 x 6.15 x 3.39"
STI-9708	7.49 x 6.74 x 6.09"
STI-9711	8.26 x 8.26 x 3.54"
STI-9714	8.55 x 8.55 x 6.23"
STI-9717	6.1 x 9.3 x 2.4"
STI-9720	6.1 x 9.3 x 4.9"
STI-9729	7 x 7 x 7"
STI-9730	12 x 12 x 12"

STI-9731	12 x 12 x 8"
STI-9732	18 x 15 x 13"
STI-9880	10.45 x 62.75 x 6.2"
STI-9881	10.45 x 98.25 x 6.2"
STI-101075	10 x 10 x (63 to 75)"
STI-241416	33.25 x 23.29 x 16"
STI-282121	39.06 x 32.01 x 21.29"



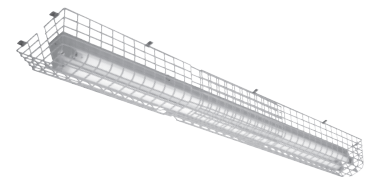
STI-101075



STI-9705



STI-9729



STI-9880